

Integrated Health Systems:

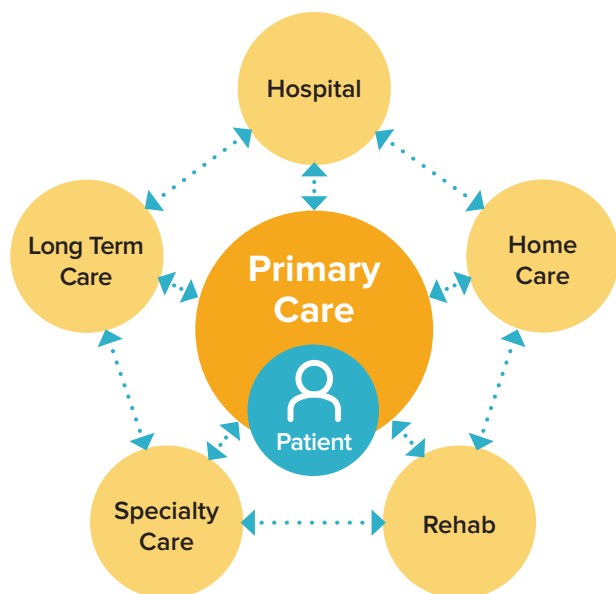
A model long-supported by the OMA that can benefit patients, physicians and the system

2013

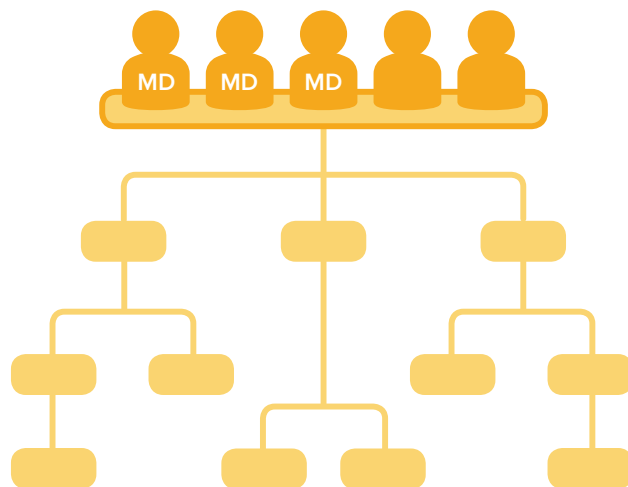
In **2013**, the OMA published a policy paper stating:

A more integrated approach to primary care will result in a stronger health system

An integrated health system,



that is physician led,



and supported by

- Modern infrastructure (e.g., shared health record, access to test results and drug records)
- Effective communication between providers and with patients
- Team-based approach to care

leads to:

- ✓ Better patient care
- ✓ Improved patient and provider satisfaction
- ✓ System efficiencies

Reference:

Ontario Medical Association. Priorities for Building an Integrated and Accessible Primary Care System in Ontario [Internet].

Toronto, ON: Ontario Medical Association; 2013 October. 24p. Available from:

<https://www.oma.org/wp-content/uploads/private/finalprimarycareaccessintegrationpaper-october2013.pdf>